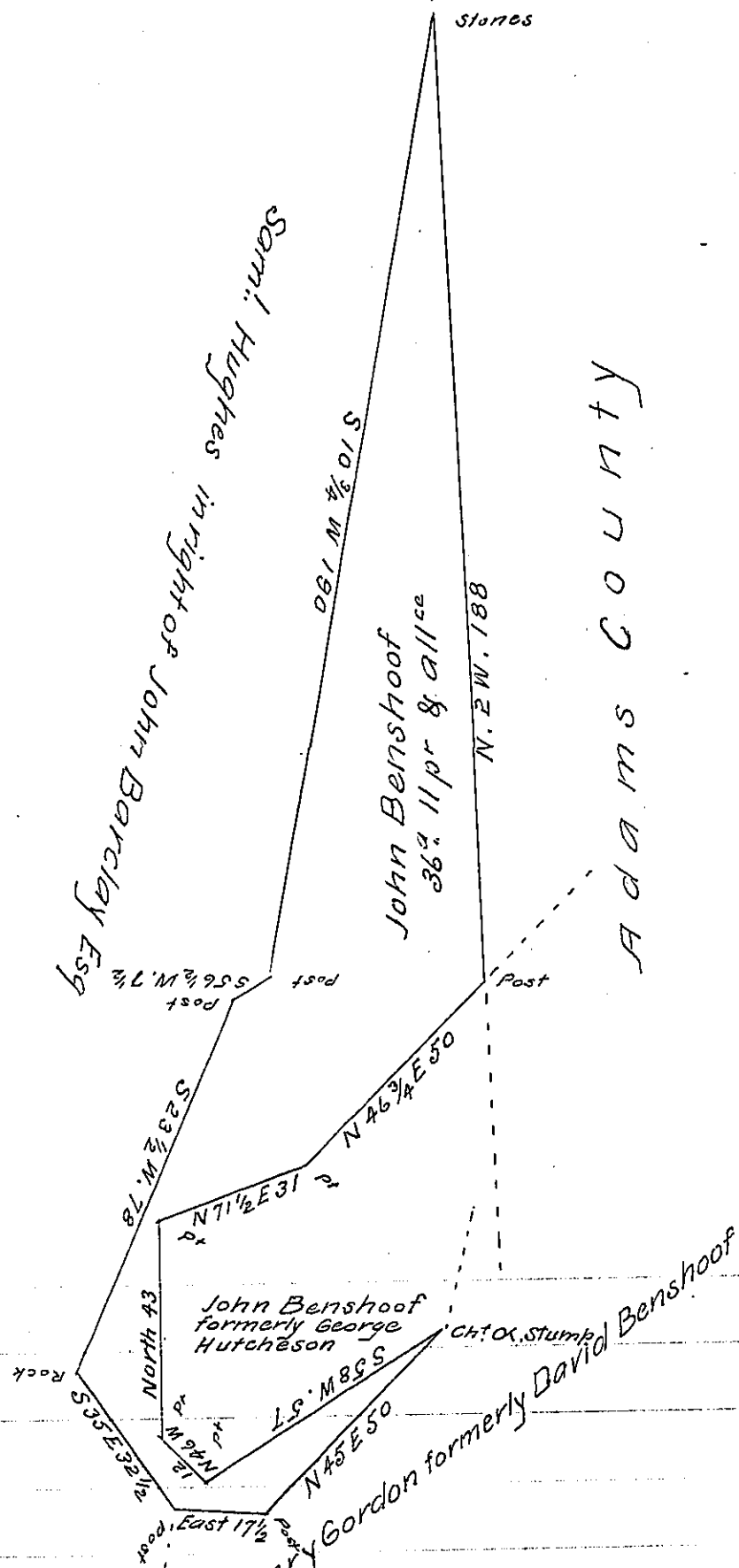


FORM No. 1.



A Draught of a tract of land situate in Washington Township Franklin County Containing thirty six acres, eleven perches and an allowance of Six per Cent for Roads &c. Surveyed 7th March 1839 In pursuance of a Warrant granted to John Benshoof for 185^a bearing date the 25th day of February 1839 —

Note. About one half of the above land is improved —
 To John Taylor Esquire
 Surveyor General of Pennsylvania

Saml. W. Armstrong D.S.

IN TESTIMONY that the above is a copy of the original remaining on file in the Department of Internal Affairs of Pennsylvania, made conformably to an Act of Assembly approved the 16th day of February 1833, I have hereunto set my hand and caused the Seal of said Department to be affixed at Harrisburg, this fourteenth day of October 1907.

Henry Howells

Secretary of Internal Affairs.